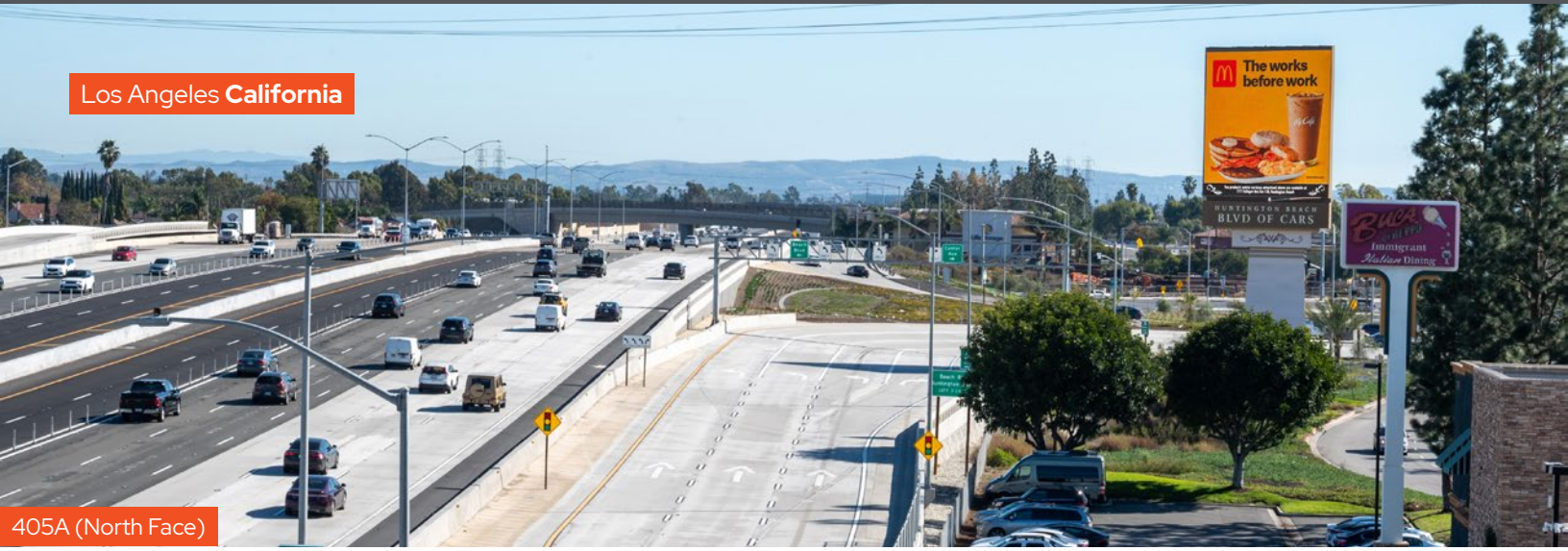


Los Angeles California

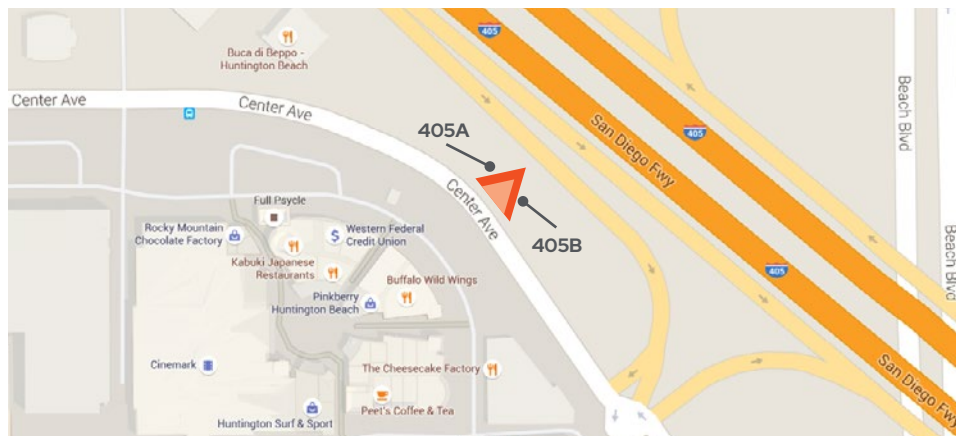


405A (North Face)



405B (South Face)

BC UNIT ID: 405 Digitals
LOCATION: I-405 N/O Beach Blvd
GEOPATH IDS: 405A: 30650074
 405B: 30650075
SIZES: 405A: 29.5' H X 33' W
 405B: 29.5' H X 33' W
FORMAT: Digital
FACING: North & South
LAT: 33.733343
LONG: -117.991622



DESTINATION DESCRIPTION

Located on one of the country's busiest freeways, Branded Cities' LA405 Digitals, are a showpiece digital network in the United States' second largest media market, Los Angeles. The unique wedge-shaped spectacular is capable of targeting both northbound and southbound I-405 traffic.

With digital inventory scarce on California's I-405, the LA405 Digitals are a central beacon to nearly 2.3 million weekly travelers heading between Los Angeles, Beverly Hills and Santa Monica in the north and the affluent Orange County communities of Huntington Beach, Costa Mesa and Newport in the south. **Hours of Operation: 19 Hours/Day**

Please Note: These displays are in partnership with the local Economic Development Zone and the advertisements are subject to certain parameters and guidelines and need prior approval to run. Your Branded Cities representative will provide all details and approvals.