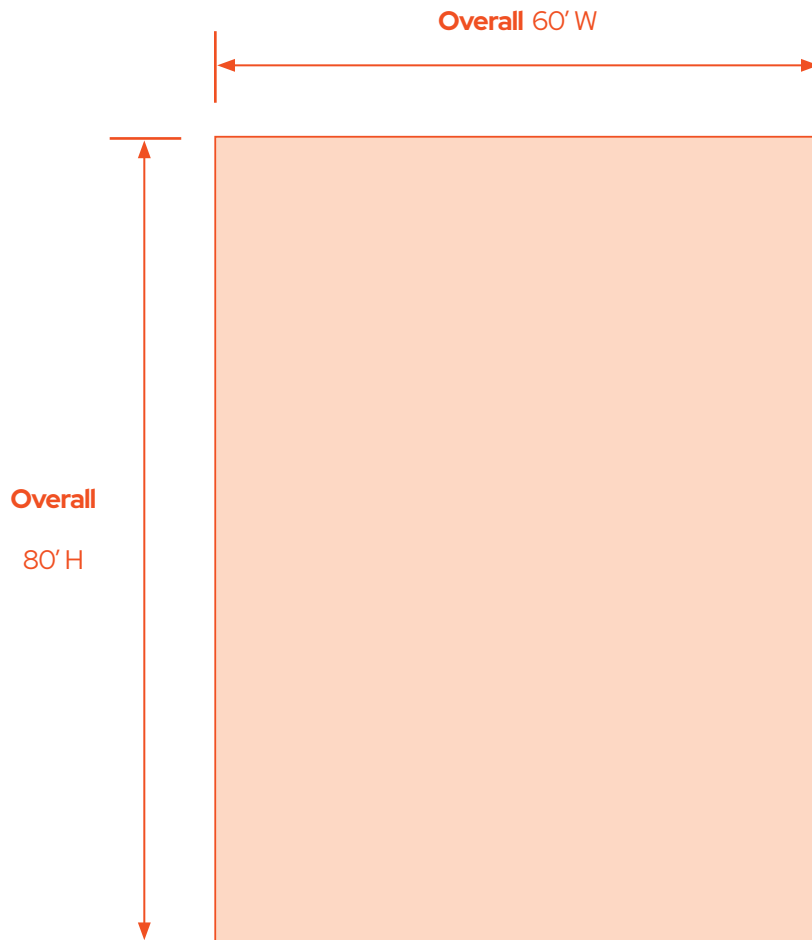


Los Angeles California



File Format Specifications

Overall Size: 80' H x 60' W
 Bleed Size: none
 Document Scaling: 1/2" = 1'
 Resolution: Minimum 600 dpi
 Color Mode: CMYK
 Text Format: Convert to outlines for upscaling
 Digital File Formats: .pdf

Materials

Hand painted

Deadlines

Print-ready art is due three (3) weeks prior to posting date.

Important Info

When designing art for this wall, please note the existing 3D architectural elements and pilasters as shown in the diagram on page 2 of this spec sheet. Please keep important images and text away from the architectural elements in the upper left quadrant, as these features are prominent.

General Production Information

- Hand painted posting work requires one to two (1 to 2) week to complete depending on complexity of the art
- Hard takedowns cannot be accommodated on this wall without a copy change. If a hard takedown is required, please discuss this with your account executive at the time of contracting.

Hard Proofs

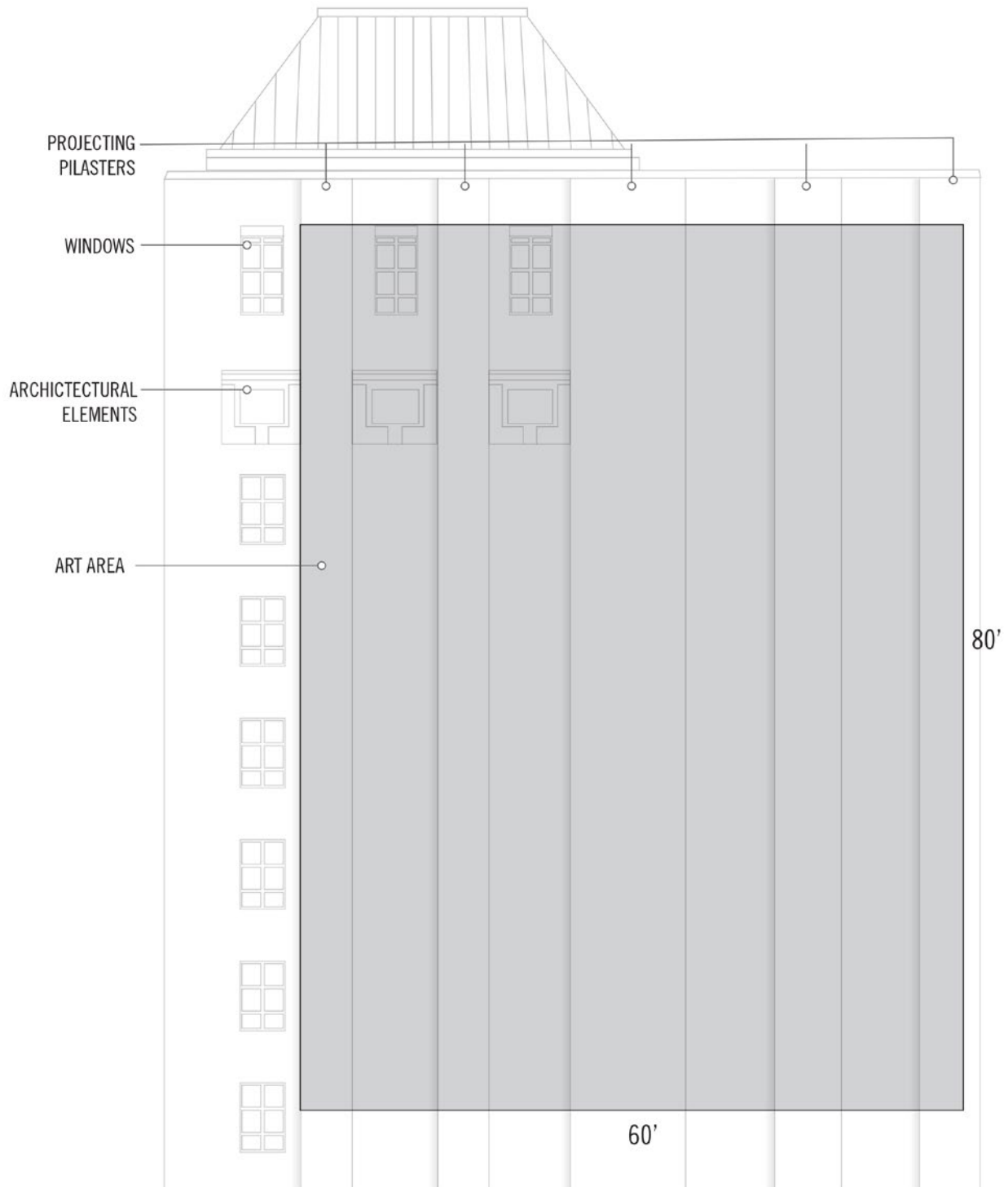
- Three (3) hard color proofs are required for 1/2" = 1'-0" scale
- For any artwork containing facial elements, please provide an 8x10 hi-res image of this detail.
- Please send color proofs to:

Apex Murals
 3858 Olympiad Dr.
 View Park, CA. 90043
 (310) 469-4912

File Delivery

Please send art via Hightail, WeTransfer, ShareFile, Dropbox or FTP to the following:
 usstatic@brandedcities.com AND apexmurals@gmail.com

Los Angeles California



NOTE: Art must be received minimum 3 weeks prior to posting.