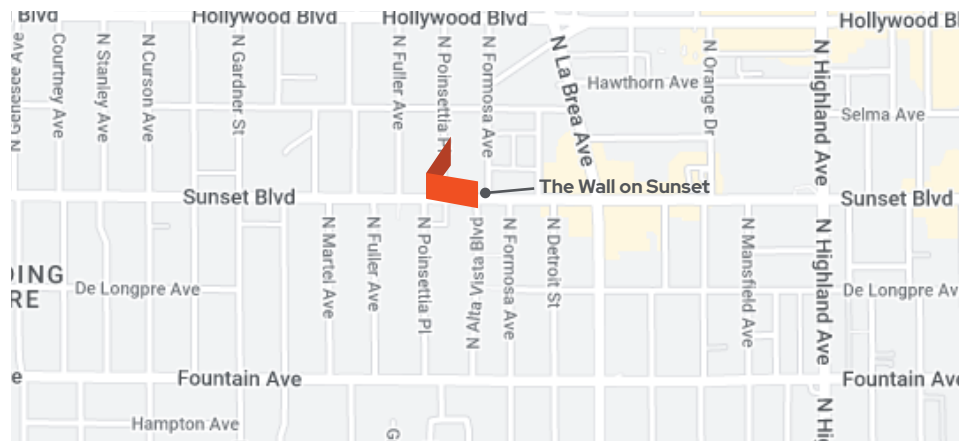


Los Angeles California



**BC UNIT ID:** The Wall  
**LOCATION:** Sunset Blvd and  
N Poinsettia Place  
**GEOPATH ID:** 50442710/50396290  
**SIZE:** 24' h x 200' w  
**FORMAT:** Wallscape, Illuminated  
**FACING:** West & South  
**LAT:** 34.098279  
**LONG:** -118.34779

[The Sunset Experience Spec Sheet](#)



## DESTINATION DESCRIPTION

This massive 4,800 square foot super-sized wall on the famed Sunset Strip is one of the largest of its kind in Los Angeles. Key for targeting upscale and trendy audiences, significant traffic on Sunset Boulevard leads to extended viewing.

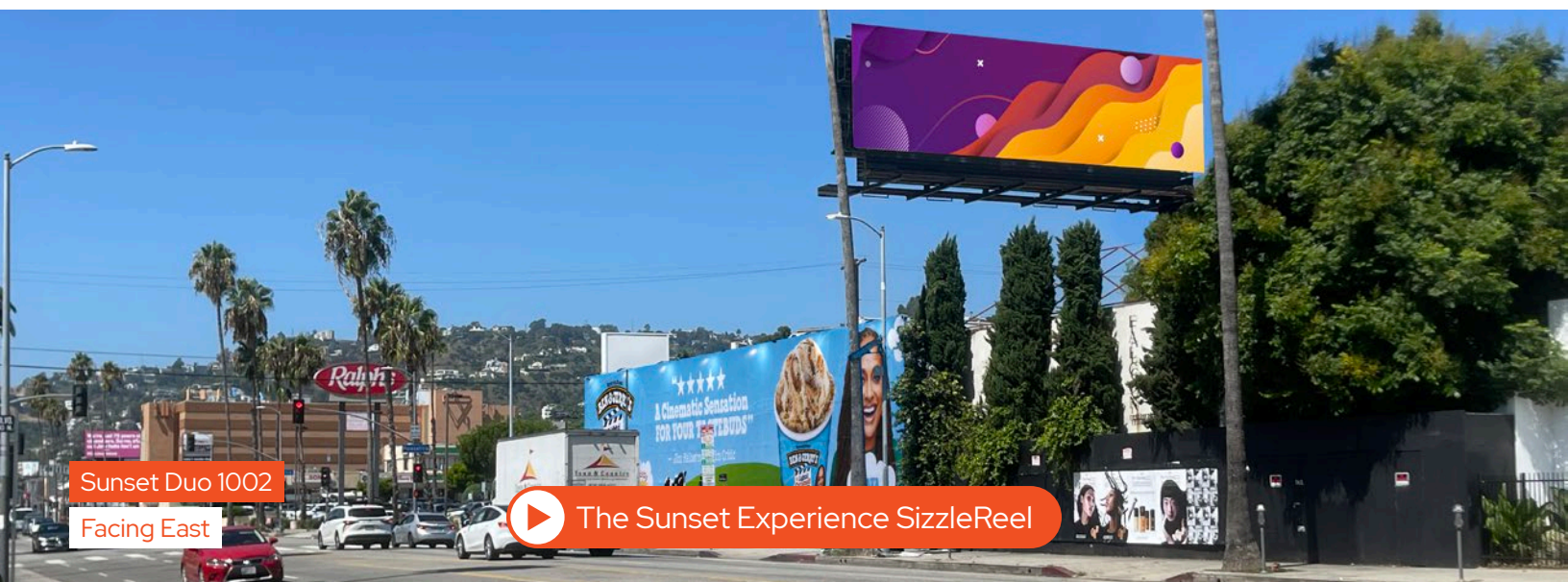




Los Angeles California


Sunset Duo 1001

Facing West



Sunset Duo 1002

Facing East

 The Sunset Experience SizzleReel

BC UNIT ID: Sunset Duo 1001/1002

LOCATION: Sunset Blvd and  
N Poinsettia Place

GEOPATH ID: 16038/16039

SIZE: 14' h x 48' w

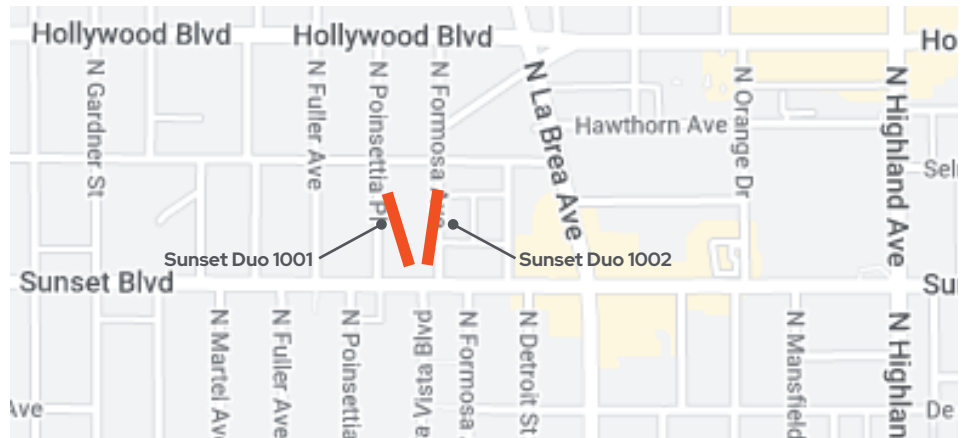
FORMAT: Static, Illuminated

FACING: East & West

LAT: 34.098279

LONG: -118.34779

[The Sunset Experience Spec Sheet](#)



## DESTINATION DESCRIPTION

These highly visible 14' x 48' bulletins on the famed Sunset Strip are key for targeting upscale and trendy audiences while significant traffic on Sunset Boulevard leads to extended viewing. When combined with the spectacular Wall on Sunset, brands will create a dominating effect allowing for unique and impactful creative executions.